

**Early Excellence**  
Training Programme  
EYFS & KS1

2017/18



# Inspirational CPD for 2017-18

---

## Contents

- 01 Planning for Improvement, Innovation & Impact

### Leadership

- 02 Monitoring & Evaluation
- 03 Inspirational Thinking Seminar
- 04 Transforming Practice
- 05 Ensuring Effective Assessment
- 06 New to Senior & Middle Leadership
- 07 Invest in EExAT
- 08 Developing as a Leader
- 09 EYFS Leadership Programme

### Developing Practice

- 10 Getting it Right from the Start
- 11 Our Expert Team
- 12 Supporting Vulnerable Groups
- 13 Removing Barriers to Learning

### Spotlight on Early Years

- 14 Ensuring Effective Practice
- 15 EYFS Essentials

### Spotlight on KS1

- 16 Embracing the Challenges of Y1
- 17 Maximising Learning in Y1

### National Services & Events

- 18 Autumn National Briefings 2017
- 20 National Conference 2017
- 22 Training Programme Overview
- 24 Working Together

---

# Planning for Improvement, Innovation & Impact

---



**In this climate of political uncertainty and challenge, and as we reflect upon the type of society we want to live in, never has it been more important to ensure that children make the best possible start to their education. Early Excellence remains firmly focused on providing schools with high quality professional development that strives to meet this goal.**

Through our Centres for Inspirational Learning in Huddersfield and London and across the wider community, we provide an extensive programme of training and development. Inside this programme you will find CPD for all levels of experience; courses, workshops and twilights designed to inform and inspire EYFS and KS1 practitioners – specialist seminars and conferences to support and guide leaders in achieving their vision for learning.

To further support you with your planning we have structured the programme so that many courses are regularly repeated across the coming year, enabling you and your team to access these at a time that fits with your needs. Also, this year a number of the schools we have worked with will be sharing their own transformation experiences at our courses and events.

By connecting with Early Excellence for your CPD, you and your staff will become part of an impactful and passionate learning community.

We look forward to working with you in the coming year.

---

**Liz Marsden**  
Founder & CEO

A handwritten signature in blue ink that reads "Liz Marsden." The signature is fluid and cursive, with a period at the end.

# Strategic Leadership: Monitoring Quality & Evaluating Impact

## Day Courses

### Being One Step Ahead: Preparing for External Inspection of the EYFS

Led by Ruth Swailes, National  
Leadership Consultant

With most schools now having a one day Ofsted inspection, being prepared has never been more important. Section 8 inspections have a particularly strong focus on leadership, especially the Headteacher, and it is therefore critical for school leaders to have a secure knowledge of pupil outcomes and the quality of provision in the EYFS.

Drawing on first-hand experience this essential course will look in detail at the inspection process, support strategic planning and evaluation of the EYFS; enabling leaders to feel confident that they are as prepared as possible.

#### Benefits

- Confidence in evaluating early years
- Clarity of the Section 8 process
- Examples of effective self-evaluation and supporting frameworks

#### Venue / Date

Northern Centre: Fri 22nd Sept  
London Centre: Wed 20th Sept

#### Price

£175.00 (exc. VAT) per delegate

#### Audience

Headteachers, Deputy Heads, Senior Leaders, EYFS Leaders

### Completing your SEF: Effective Self Evaluation of Your Early Years

Led by Ruth Swailes, National  
Leadership Consultant

This course is for senior leaders who wish to ensure that their professional knowledge of the EYFS is up to date.

The day will support strategic planning and evaluation of this important stage and further develop skills in holding EYFS leaders to account. It will look in detail at effective assessment including demonstrating and reporting pupil progress and the nature of high quality teaching. During the afternoon there will be a practical workshop exploring what evidence to collate.

#### Benefits

- Confidence in evaluating early years
- Examples of effective self-evaluation and supporting frameworks
- Support from a consultant to review your current evidence

#### Venue / Date

Northern Centre: Mon 25th Sept  
London Centre: Mon 2nd Oct

#### Price

£175.00 (exc. VAT) per delegate

#### Audience

Headteachers, Deputy Heads, Senior Leaders, EYFS Leaders

## Half Day Course & Twilight

### Gathering Evidence: Preparing for Successful EYFS Moderation

With the EYFS profile remaining in place, practitioners must feel confident that the judgments they are making about children's attainment against the ELGs are secure. A practical half day course looking at best practice and considering different sources of evidence.

#### Venue / Date

Northern Centre: Tue 13th Mar  
London Centre: Tue 13th Mar

#### Price

£75.00 (exc. VAT) per delegate

#### Audience

EYFS Leaders, Practitioners

### Governor Essentials: Being Informed About the EYFS

This twilight session has been specifically designed to support school governors with a responsibility for early years – exploring aspects of the statutory framework, best practice and key policy changes.

#### Venue / Date

Northern Centre: Mon 6th Nov  
London Centre: Tue 31st Oct

#### Price

£35.00 (exc. VAT) per delegate

#### Audience

School Governors



# Inspirational Thinking with Professor dr. Ferre Laevers

High Level Seminar



## Benefits

- Understand how Well-being & Involvement are critical to lifelong learning and development
- Hear first-hand from the developer of the Leuven Scales
- Gain a deeper understanding of how to successfully monitor Well-being and Involvement



**'I will be more considerate to all of my children's desires, needs, wishes and experiences. It was very important, everyone should hear it.'**

### Eamon Gamee

Teacher, Kintore Way Nursery, Southwark

## Well-being & Involvement: A Whole School Approach

Led by Professor dr. Ferre Laevers

The Leuven Scales of Well-being & Involvement have become widely recognised within the education sector as a vitally integral aspect of ensuring that children's needs – especially emotional and cognitive – are being met by provision. The implications that this provides for emotional and mental health – a subject high on the national agenda – as well as the quality of learning means discussion of this approach is more significant than ever.

In this thought provoking and inspiring seminar, Professor dr. Ferre Laevers will explore how this approach can be extended to ensure its effective use in the early years and through into primary – and how these tools can be used to identify and overcome barriers to effective learning.

### Venue / Date

Northern Centre: Wed 14th Mar  
London Centre: Fri 16th Mar

### Price

£200.00 (exc. VAT) per delegate

### Audience

Headteachers, Deputy Heads, Senior Leaders, EYFS Leaders, Teachers



### Professor dr. Ferre Laevers

Director, Research Centre for Experiential Education, University of Leuven, Belgium.

Professor dr. Ferre Laevers is the Director of the Research Centre for Experiential Education, Leuven University, Belgium. He is considered the founder of Experiential Education when, in the 1960s as a doctoral student in educational sciences, and heavily influenced by the work of Carl Rogers and Jean Piaget, he started several ground breaking projects into the study of deep level learning. His recent work focused on Well-being & Involvement has led to the study and application of a quality framework for the assessment and improvement of early years practice.

## How to Book Training

Courses take place in our Northern and London Centres. All our Full Day Courses include lunch and refreshments per delegate. For further details and to book go online at: [earlyexcellence.com/cpd-courses](http://earlyexcellence.com/cpd-courses)

# Strategic Leadership: Transforming Practice

These three inspiring leadership twilights have been specifically designed to enable leaders to examine their current practice, consider other possible ways of working and to hear first-hand from schools and settings that have been successful in transforming and maximising learning for all children.

## Twilights

### Striving for Excellence: Rethinking Your Nursery

With much debate about what is effective practice in nursery provision and the complex relationship between the adult, child and environment as well as the additional challenge of the introduction of the 30 hour offer, this inspiring twilight provides the ideal opportunity for leaders and practitioners to reflect upon their current provision.

We will also hear from those who have successfully transformed and enriched learning experiences for their children.

#### Venue / Date

Northern Centre: Thu 12th Oct  
London Centre: Wed 4th Oct

#### Price

£35.00 (exc. VAT) per delegate

#### Audience

Headteachers, Deputy Heads, Senior Leaders, EYFS Leaders

### Striving for Excellence: Rethinking Your Reception

Building on the findings of The Hundred Review of current reception practice – this highly informative twilight is an opportunity for leaders and teachers to examine current practice within their school and consider the challenges facing this unique year group.

There will be the opportunity to learn how schools have been successful in raising the quality of teaching and learning, through innovative and inspiring practice, resulting in sustained improvements in outcomes.

#### Venue / Date

Northern Centre: Mon 9th Oct  
London Centre: Tue 3rd Oct

#### Price

£35.00 (exc. VAT) per delegate

#### Audience

Headteachers, Deputy Heads, Senior Leaders, EYFS Leaders

### Striving for Excellence: Rethinking Your KS1

During this thought-provoking twilight, we will look at how schools have successfully embedded enquiry based learning and the sustained impact that this has had on attainment across the curriculum. We will consider the importance and value of supporting independent learning in order to support children's progress and reflect on a range of strategies that effectively support and guide children's creative and critical thinking.

A diverse range of inspiring case studies will be shared and you will have the opportunity to hear first-hand from schools that have successfully transformed KS1.

#### Venue / Date

Northern Centre: Tue 17th Oct  
London Centre: Mon 16th Oct

#### Price

£35.00 (exc. VAT) per delegate

#### Audience

Headteachers, Deputy Heads, Senior Leaders, KS1 Leaders





**'Lots to take back and use.  
100% worth it, and great to  
network too!'**

**Jennifer Murdoch**  
EYFS Leader, Stanley St. Peter's,  
Wakefield

## How to Book Training

Courses take place in our Northern and London Centres. All our Full Day Courses include lunch and refreshments per delegate. For further details and to book go online at: [earlyexcellence.com/cpd-courses](http://earlyexcellence.com/cpd-courses)

# Starting Points: Ensuring Effective Assessment

## Day Courses



### Ensuring Effective Early Years Assessment

Led by Jan Dubiel, National Director

Effective approaches to assessment and the subsequent use of evidence gathered lie at the heart of good practice and yet it is often the most contentious aspect.

This in-depth course explores all aspects of assessment in the EYFS, including manageable and meaningful approaches to observations, recording and demonstrating progress – and provides opportunities for participants to review and utilise their understanding of the children they work with.

#### Benefits

- Clarity of how to use assessment to support learning
- Gain greater confidence in using observation based assessment
- Examples of strategies and tools to help support effective assessment

#### Venue / Date

Northern Centre: Wed 1st Nov  
London Centre: Tue 14th Nov

#### Price

£175.00 (exc. VAT) per delegate

#### Audience

Headteachers, Deputy Heads, Senior Leaders, EYFS Leaders, Assessment Leads

### Ensuring Effective KS1 Assessment

Led by Ruth Swailes, National Leadership Consultant

With the ongoing debate surrounding KS1 SATS and external scrutiny of data, it is important for teachers to feel confident that the assessment strategies being used are effective in ensuring children make good progress.

This course will explore all aspects of assessment in KS1 – building on evidence gathered during the EYFS. As well as considering statutory assessments, delegates will consider how assessment can be used to successfully support planning and identify needs for individuals and groups of children.

#### Benefits

- Confidence in using assessment to plan effectively
- Clarity of how to build on EYFS data sets
- Practical examples of assessment strategies to use in school

#### Venue / Date

Northern Centre: Mon 20th Nov  
London Centre: Fri 24th Nov

#### Price

£175.00 (exc. VAT) per delegate

#### Audience

Headteachers, Deputy Heads, Senior Leaders, KS1 Leads, Assessment Leads

# New to Senior & Middle Leadership

## Day Courses

### New to Headship: Understanding Early Years

Getting it right from the start is critical for every child. This course has been specifically designed to give newly appointed headteachers with limited early years' experience a thorough introduction to everything they need to know.

Starting with a detailed overview of the statutory requirements for the EYFS; including the safeguarding and welfare requirements, participants will then explore what is best practice and how to confidently observe learning in the early years. Time will also be spent supporting you with how to understand and interpret EYFS data to enable you to use it effectively for school improvement purposes.

#### Benefits

- A clear understanding of the statutory requirements for the EYFS
- Knowledge of the key features of continuous provision in early years
- Resources to support you with monitoring and evaluating practice

#### Venue / Date

Northern Centre: Tue 31st Oct  
London Centre: Tue 17th Oct

#### Price

£175.00 (exc. VAT) per delegate

#### Audience

Headteachers, Prospective Headteachers

### New to Leading in the EYFS & KS1

Taking on a leadership role within a school is challenging and rewarding. It offers the opportunity to make a greater difference, being able to influence others by supporting, guiding and mentoring the quality of teaching and learning.

These courses for both EYFS and KS1 will explore effective ways to develop a shared understanding of what is quality practice within the specific Key Stage and effective strategies to improve teaching across a team. The day will be a mixture of input and group learning relevant to either EYFS or KS1, enabling participants to gain new knowledge, discuss shared concerns and reflect on practice.

#### Benefits

- Tools for use as part of staff development or mentoring
- Practical ideas to help you strategically manage your new role

#### Venue / Date

**New to Leading in the EYFS**  
Northern Centre: Tue 10th Oct  
London Centre: Tue 10th Oct  
**New to Leading in KS1**

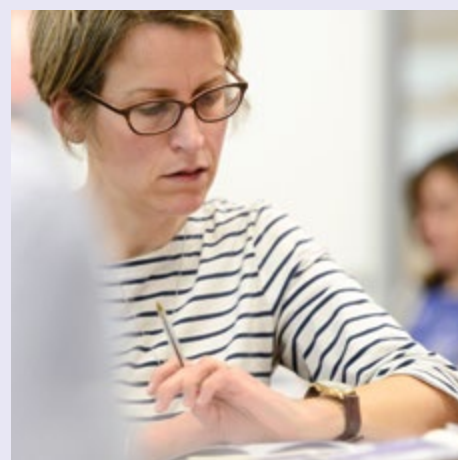
Northern Centre: Thu 12th Oct  
London Centre: Thu 12th Oct

#### Price

£175.00 (exc. VAT) per delegate

#### Audience

Newly appointed EYFS and KS1 Leaders



## How to Book Training

Courses take place in our Northern and London Centres. All our Full Day Courses include lunch and refreshments per delegate. For further details and to book go online at: [earlyexcellence.com/cpd-courses](http://earlyexcellence.com/cpd-courses)



# Invest in EExAT: The Complete Early Years Assessment System

## Why Choose EExAT

EExAT is the only online early years tool with all your assessment needs in one place. It supports best practice in assessment and documenting learning and is efficient and intuitive to use. It generates robust data and comprehensive reports in an instant and the exit data feeds into Y1 assessment systems.

### Benefits

- Accurate practitioner-led assessment of AoLs; CoELs; Well-being & Involvement
- Captures attainment at start and end of year and termly progress, both age-related and non-age related
- Teacher and Parent Apps for observations, photos and creating Learning Journals
- Reports on attainment and progress at pupil, cohort and specific group level
- Integrated system for moderation and reporting of data across schools working together, for example MATs



**'My team have found EExAT simple to use. It saves us so much time and gives us a clear picture of where our children are on their journey of development.'**

**Gul Jabeen**

Head of Foundation Stage,  
Al Diyafah School, Dubai

## EExAT Pupil Tracker



## EExAT Learning Journal



## EExAT Pupil Profile



## How to Subscribe to EExAT

For more information and to sign up to EExAT visit:  
[earlyexcellence.com/eexat](http://earlyexcellence.com/eexat)

# Developing as a Leader in the EYFS & KS1

## Day Courses

### Strategically Leading Outstanding Teaching in the EYFS

Led by Prof. Julie Fisher, National Consultant

The quality of teaching in the early years is greatly enhanced by the knowledge of leaders in supporting and challenging best practice. This course will outline the important features of outstanding practice in the early years. It will offer leaders the opportunity to discuss how outstanding teaching can be enabled and how it should be monitored.

By the end of the course delegates will feel more confident as advocates for the education experiences of the youngest children in their schools and better equipped to lead and develop practice across their team.

#### Benefits

- A clear understanding of the key features of quality early years practice
- Strategies to support with leading the development of others

#### Venue / Date

Northern Centre: Fri 20th Apr  
London Centre: Thu 10th May

#### Price

£175.00 (exc. VAT) per delegate

#### Audience

EYFS Leaders, Senior Leaders

## Three Day Course



### Strategically Leading Outstanding Teaching in KS1

Led by Ruth Swailes, National Leadership Consultant

School effectiveness is judged not only on the quality of teaching and the impact it has on outcomes, but on the way leaders strive to ensure excellence for every child.

This in-depth course will focus on how KS1 leaders create and embed a vision for learning and teaching which enables excellence for all learners. We will consider a range of evidence based approaches to enable quality teaching and learning – and explore how to build a culture of excellence, develop consistency of quality and look at practical tools to help you achieve your vision.

#### Benefits

- A clear understanding of the key features of outstanding KS1 practice
- Strategies to support with leading the development of others

#### Venue / Date

Northern Centre: Tue 14th Nov  
London Centre: Wed 15th Nov

#### Price

£175.00 (exc. VAT) per delegate

#### Audience

KS1 Leaders, Senior Leaders

### Developing an Action Research Project

Led by Prof. Julie Fisher, National Consultant

Getting involved in research can be highly rewarding and becoming involved as a leader takes it to a different level. Join these Action Research Communities of Practice to inspire thinking, challenge practice and provoke innovation.

#### Day 1

Learning How to be a Researcher

#### Day 2

Challenging Thinking & Honing Skills

#### Day 3

Reflecting on Learning & Embedding Action Research

#### Venue / Date

Northern Centre:  
Day One – Fri 10th Nov  
Day Two – Fri 16th Mar  
Day Three – Fri 15th Jun

#### London Centre:

Day One – Fri 17th Nov  
Day Two – Fri 23rd Mar  
Day Three – Fri 8th Jun

#### Price

£450.00 (exc. VAT) per delegate

#### Audience

EYFS Leaders, Senior Leaders, Headteachers, Teachers



# EYFS Leadership Programme

## Four Day Programme



**‘Extremely useful! The course gave me increased confidence in my own vision and leadership, as well as helping me shape actions for future development of our EYFS.’**

**Louise Foster**  
EYFS Lead, Lound Academy Trust, Sheffield

## How to Book Training

Courses take place in our Northern and London Centres. All our Full Day Courses include lunch and refreshments per delegate. For further details and to book go online at: [earlyexcellence.com/cpd-courses](http://earlyexcellence.com/cpd-courses)

### Leading the EYFS with Skill & Confidence

To lead a team effectively and inspire a continual drive towards excellence requires the highest quality leadership. This long-term project will support leaders to deepen their understanding of the multi-faceted nature of their role; ensuring they are able to motivate and inspire their teams, whilst remaining focused on what matters for young children. The programme has been designed to provide you with many opportunities to reflect upon your own expertise and enrich your professional knowledge of outstanding early years education. Throughout the course you will be invited to participate in a variety of gap tasks. Each will be designed to support you in your leadership journey and there will be opportunities to share and celebrate the groups' learning on Day 4.

#### Day 1: Leading Values

The project will begin by establishing absolute clarity about what we want for young children, taking delegates back to their values and motivations as educators and establishing a clear vision of excellence.

#### Day 2: Leading Practice

This day will explore how it is essential that leadership is based on secure understandings of best practice, quality provision and the ability to monitor the impact on children's overall development.

#### Day 3: Leading People

During this day participants will consider how to effectively manage and lead others. We will explore models of mentoring, performance management and designing effective staff development programmes.

#### Day 4: Leading Accountability

We will review current approaches to assessment and how data can be used to inform practice – exploring ways of clearly identifying and prioritising areas for development, the process of change and its management.

#### Benefits

- Greater confidence in your role
- Strategies to support you with successfully leading change
- Clarity of the relationship between forms of evidence and accountability

#### Venue / Date

Northern Centre:  
Day One – Mon 2nd Oct  
Day Two – Tue 5th Dec  
Day Three – Fri 23rd Feb  
Day Four – Fri 27th Apr

London Centre:  
Day One – Fri 22nd Sept  
Day Two – Mon 4th Dec  
Day Three – Fri 23rd Feb  
Day Four – Fri 27th Apr

#### Price

£550.00 (exc. VAT) per delegate

#### Audience

EYFS Leaders, Senior Leaders

# Getting it Right from the Start

## Three Day Courses

### Moving into the EYFS: Getting Off to a Flying Start

This three day course has been specifically designed to equip teachers who are new to working in the early years with knowledge and skills that underpin a clear and principled pedagogy. It will enable participants to critically reflect on their own practice and develop their professional expertise in working with younger children.

Across the course we will look closely at the requirements of the statutory framework (EYFS) and examine how this can be translated into quality practice for all children. The programme will also draw on current research, child development theories and some of the great pioneers and innovators in early education.

#### Venue / Date

Northern Centre:  
Day One – Tue 19th Sept  
Day Two – Wed 27th Sept  
Day Three – Wed 15th Nov

London Centre:  
Day One – Tue 19th Sept  
Day Two – Thur 28th Sept  
Day Three – Thur 28th Nov

#### Price

£450.00 (exc. VAT) per delegate

#### Audience

Newly appointed EYFS Teachers and those seeking to refresh their practice

### Moving into Y1: Getting Off to a Flying Start

In Y1 it is essential that practice offers continuity from the EYFS and sufficient challenge for all children to make progress. This three day course has been specifically designed to enable teachers new to working with this exciting year group to consider how to successfully develop quality and inspirational provision which enriches curriculum delivery.

We will review current practice and address the issue of balance between children's self-initiated learning and adult-led learning. We will explore curriculum coverage that meets the needs of all children; both indoors and outdoors – and look closely at literacy and numeracy in Y1, considering ways to offer meaningful activities.

#### Venue / Date

Northern Centre:  
Day One – Mon 18th Sept  
Day Two – Tue 26th Sept  
Day Three – Tue 7th Nov

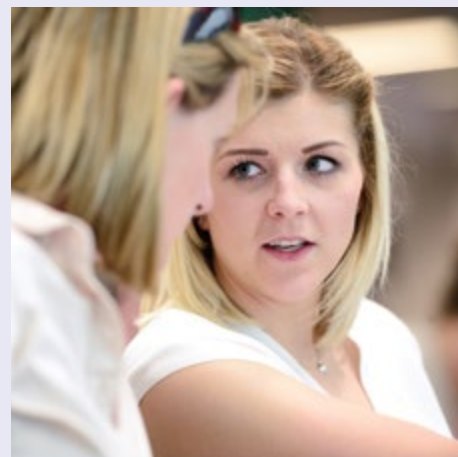
London Centre:  
Day One – Mon 18th Sept  
Day Two – Thur 28th Sept  
Day Three – Thur 2nd Nov

#### Price

£450.00 (exc. VAT) per delegate

#### Audience

Newly appointed KS1 Teachers and those seeking to refresh their practice



## How to Book Training

Courses take place in our Northern and London Centres. All our Full Day Courses include lunch and refreshments per delegate. For further details and to book go online at: [earlyexcellence.com/cpd-courses](http://earlyexcellence.com/cpd-courses)



# Gain Knowledge with Our Expert Team



## Our Curriculum Team

Our Curriculum Team are highly effective teachers, leaders and trainers who have held leadership positions in pre-schools, nurseries and schools. We only work with the best trainers who have a depth of knowledge to share and a dynamic delivery style that engages the hearts and minds of everyone working in early years at all levels.



## Our Strategic Team

Our Strategic Team have held senior positions as Government Advisers, Local Authority Advisers and Headteachers which enables us to draw on a vast array of expertise as we work strategically with policy makers, national organisations and school leaders to respond to, develop and deliver local initiatives and development projects.



## How to Book Consultancy

To find out more about school based consultancy please contact [phil@earlyexcellence.com](mailto:phil@earlyexcellence.com)



# Supporting Vulnerable Groups

## Day Courses

### Demonstrating Impact: Effective Use of Pupil Premium Funding

With significant scrutiny on the impact of both pupil premium and early years' pupil premium funding, it is essential that those responsible for making use of this funding maximise its impact.

By exploring case studies from a diverse range of schools and unpicking the approaches used on the spending of premium funding in the EYFS and KS1, this course will help leaders to explore how best to support the learning of those children in receipt of the funding.

#### Benefits

- An understanding of evidence based strategies for effective use of the funding
- Case study examples of how pupil premium funding has had measurable impact
- Practical tools to help evaluate current use of funding

#### Venue / Date

Northern Centre: Fri 1st Dec  
London Centre: Wed 29th Nov

#### Price

£175.00 (exc. VAT) per delegate

#### Audience

EYFS Leaders, KS1 Leaders, Senior Leaders, Assessment Leads, SENCOs

## Half Day & Twilight

### Recognising the Needs of Boys' Learning

The gender gap is a much-discussed topic across the education sector. Practitioners often come across the same problems; with boys not appearing to fully engage in adult-led activities or reluctant to use all experiences provided to support their learning.

This course will explore theories behind young children's development and how these relate specifically to boys. Throughout the day participants will consider how we can address these issues in imaginative and practical ways.

#### Benefits

- A deeper understanding of boys learning in the EYFS and KS1
- Strategies and tools to help you evaluate your current provision
- Materials to share with other staff and parents

#### Venue / Date

Northern Centre: Mon 16th Oct  
London Centre: Tue 14th Nov

#### Price

£175.00 (exc. VAT) per delegate

#### Audience

EYFS Leaders, KS1 Leaders, Senior Leaders, Assessment Leads, SENCOs, Teachers

### Working Together: Understanding How to Successfully Engage with Parents

Working with parents in children's early learning and development is central to the EYFS. During this course we will consider some of the evidence that shows the difference working in partnership with parents makes and explore how to achieve this.

#### Venue / Date

Northern Centre: Tue 6th Feb  
London Centre: Tue 6th Feb

#### Price

£75.00 (exc. VAT) per delegate

#### Audience

EYFS Leaders, KS1 Leaders, Senior Leaders, SENCOs

### Working with Two Year Olds: Developing Your Provision

In this twilight we will explore what is special about being two. Time will be spent considering children's development, how this relates to play, active learning and thinking.

#### Date

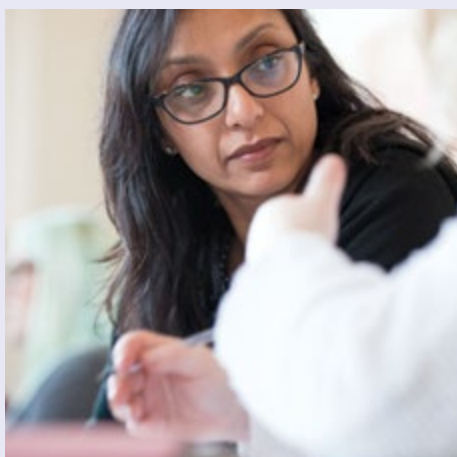
Northern Centre: Thur 19th Oct  
London Centre: Thur 19th Oct

#### Price

£35.00 (exc. VAT) per delegate

#### Audience

EYFS Leaders, Senior Leaders, Practitioners looking to develop two year old provision



**'I am so happy I found this course and company, it has been a really enjoyable and informative day!'**

**Holly Quinlan**  
SENCO, Sankey Valley St James'  
Primary School, Warrington

## How to Book Training

Courses take place in our Northern and London Centres. All our Full Day Courses include lunch and refreshments per delegate. For further details and to book go online at: [earlyexcellence.com/cpd-courses](http://earlyexcellence.com/cpd-courses)

# Removing Barriers to Learning with Louise Jackson

## Day Course

### Ensuring Quality Talk: Improving Provision for Language & Communication

Led by Louise Jackson,  
Early Excellence Consultant

The acquisition of spoken language and communication skills in early childhood builds strong foundations for reading, writing and mathematics. Using our latest exemplifications, this course will equip practitioners with detailed knowledge of the key milestones in early listening and attention, understanding, speaking and social communication.

Delegates will observe and practice new ways to communicate and model language alongside children's play; and explore the idea of learning pathways to address specific language needs and challenge you to think differently about early intervention programmes – discovering how to ensure that all children are exposed to quality talk within high quality continuous provision.

#### Venue / Date

Northern Centre: Fri 2nd Feb  
London Centre: Thur 8th Feb

#### Price

£175.00 (exc. VAT) per delegate

#### Audience

EYFS Leaders, KS1 Leaders, Senior Leaders, SENCOs, Teachers



#### Benefits

- Gain a deeper knowledge of the developmental stages of early talk
- Strategies to help you create a language rich environment
- Tools to help you lead and support others with improving provision for communication and language



**Louise Jackson**  
Early Excellence  
Curriculum Consultant

Louise has wide experience of teaching, training and writing educational materials across early years, primary and special education. As an LA Early Years Adviser in Herefordshire she set up partnership projects to support the inclusion of children with autism, early language and complex needs. Louise led the 'Early Years Networks' programme for The National Education Trust and wrote materials for the Early Support Developmental Journals and Scope's 'Learning Together' online toolkit.

# Spotlight on Early Years: Ensuring Effective Practice

## Two Day Courses



## Workshop & Twilight

### Developing Young Writers in the EYFS

Led by Kym Scott, Independent Consultant

Guiding children's mark making towards writing is a complex and skilful process. This two day course will explore how to build on what young children find meaningful as a gateway to becoming a confident and competent writer. There will be examples of inspirational practice and delegates will be invited to complete a gap task.

Day 1: This day will focus on the foundations for early writing for 3-5 year olds and the key skills children need to acquire.

Day 2: This day will include a focus on developmentally appropriate ways of assessing and evidencing children's progress in writing.

#### Venue / Date

Northern Centre:  
Day One – Tue 21st Nov  
Day Two – Fri 26th Jan

London Centre:  
Day One – Mon 13th Nov  
Day Two – Mon 8th Jan

#### Price

£300.00 (exc. VAT) per delegate

#### Audience

EYFS Teachers, Literacy Leads

### Developing Young Mathematicians in the EYFS

Led by Helen Tate, Independent Consultant

This two day course will investigate the wonder of mathematics in early years, providing practitioners with the awareness of the potential of maths in everyday activity – looking at a range of ideas and strategies for further enhancing provision and skills-based teaching. Delegates will be invited to complete a gap task.

Day 1: We will focus on developing an inspiring learning environment, indoors and outdoors, that supports mathematical thinking, reasoning and problem solving.

Day 2: Explores the role of the adult in supporting and extending children's mathematical language and thinking.

#### Venue / Date

Northern Centre:  
Day One – Mon 6th Nov  
Day Two – Mon 15th Jan

London Centre:  
Day One – Fri 17th Nov  
Day Two – Fri 19th Jan

#### Price

£300.00 (exc. VAT) per delegate

#### Audience

EYFS Teachers, Maths Leads

### Sounding it Out! Fun with Phonics

This practical workshop explores the development of early phonics knowledge, starting with speaking and listening skills and building on these to teach phonemes and graphemes which encourage children's confidence as readers and writers.

#### Venue / Date

Northern Centre: Thur 16th Nov  
London Centre: Thur 2nd Nov

#### Price

£55.00 (exc. VAT) per delegate

#### Audience

EYFS Practitioners, Y1 Teachers, TAs, Nursery Nurses, SENCOs

### To Ten & Back: Number Bonds in the Early Years

Our numerical system is based on our knowledge of numbers to ten and it is essential that children fully understand number bonds. This twilight will demonstrate ways for children to experience number bonds in a meaningful and practical way.

#### Venue / Date

Northern Centre: Wed 18th Oct  
London Centre: Wed 18th Oct

#### Price

£35.00 (exc. VAT) per delegate

#### Audience

EYFS Practitioners, Y1 Teachers, TAs, Nursery Nurses, SENCOs

# EYFS Essentials

These three essential workshops have been designed to provide highly practical CPD opportunities for your early years team. They are an ideal introduction for anyone new to working in early years or for team members looking to refresh their knowledge.

## Workshops

### Supporting Children's Self-Initiated Learning: How to Use Continuous Provision Effectively

Understanding how to use continuous provision is at the heart of a quality planning framework for all children in their early years. This introductory, highly practical workshop explores how an effective environment, carefully planned and organised, promotes a broad range of learning opportunities for children. It will cover the key principles of how to establish continuous provision, indoors and outdoors, which meets the needs of the whole curriculum and embeds learning.

#### Benefits

- A clearer understanding of what continuous provision is
- Clarity of how it supports children's learning
- Practical ideas to develop continuous provision

#### Venue / Date

Northern Centre: Wed 27th Sept  
London Centre: Wed 27th Sept

#### Price

£55.00 (exc. VAT) per delegate

### Building on Children's Interests: How to Maximise Opportunities for Learning

From dinosaurs to the latest films; knowing how to skilfully and meaningfully shape continuous provision, and provide enhancements which connect with children's interests is critical to helping children embed and extend learning. This inspirational and practical workshop explores a broad variety of activities and planning that successfully respond to children's diverse interests and preoccupations. It will also include case studies from schools and settings which have enriched learning and include time for delegates to reflect on their current practice.

#### Benefits

- An understanding of the relationship between continuous provision and enhancements
- Strategies to help extend children's learning
- Practical ideas for developing provision

#### Venue / Date

Northern Centre: Mon 2nd Oct  
London Centre: Wed 11th Oct

#### Price

£55.00 (exc. VAT) per delegate



Make the most of your budget by booking these three essential workshops together for £150.00 (exc. VAT) by selecting the EYFS Essentials Workshops Bundle online.

### Securing Effective Interactions: How to Support & Extend Children's Learning

How good are your interactions with children? High quality interactions are central to effective early years practice and ensuring all children make progress. For these to be successful requires skilled adults. This workshop will demonstrate how engaging in effective conversations during child-initiated activities helps children absorb new vocabulary, expand their knowledge and extend their thinking. Delegates will come away with ways to successfully improve the quality of their adult-child interactions; improving outcomes across the curriculum for all children.

#### Benefits

- An understanding of the importance of adult-child interactions
- A clear grasp of ways to develop your practice
- Inspiring ways to develop an environment that promotes high quality interactions

#### Venue / Date

Northern Centre: Tue 14th Nov  
London Centre: Wed 8th Nov

#### Price

£55.00 (exc. VAT) per delegate

# Spotlight on KS1: Embracing the Challenges of Y1

## Two Day Courses

### Securing Progression: Extending Young Writers in Y1

This two day course will explore how to build on children's prior mark-making experiences in the EYFS and ensure that the teaching of writing is developmentally appropriate, meaningful and challenging. We will consider how learning can be adapted to meet diverse needs and interests and inspire young writers. Delegates will also complete a gap task.

Day 1: We will look at unpicking the learning needs of 5 and 6 year olds. A key focus will be on considering ways in which children can continue to develop as independent, but accountable writers.

Day 2: We will explore how to help children progress with writing in Y1 whilst continuing to inspire deep learning – evaluating current practice and considering realistic and manageable next steps.

#### Venue / Date

Northern Centre:  
Day One – Wed 1st Nov  
Day Two – Tue 27th Feb

London Centre:  
Day One – Tue 28th Nov  
Day Two – Wed 7th Mar

#### Price

£300.00 (exc. VAT) per delegate

#### Audience

Y1 Teachers, Literacy Leads



### Securing Progression: Extending Young Mathematicians in Y1

Led by Sharon Day, Independent Consultant

Teaching in a way that supports children in developing mathematical thinking, will ensure that mastery of the subject is achieved. This course will enable teachers to evaluate their current practice and deepen their knowledge. Delegates will also complete a gap task.

Day 1: Focusing on the mathematical experiences that children can take part in across different areas of the curriculum, considering how to promote long term mathematical learning.

Day 2: We will explore teaching approaches that promote exploration, investigation and challenge – planning coherent units of work that ensure progression for all children.

#### Venue / Date

Northern Centre:  
Day One – Fri 6th Oct  
Day Two – Fri 24th Nov

London Centre:  
Day One – Fri 13th Oct  
Day Two – Fri 1st Dec

#### Price

£300.00 (exc. VAT) per delegate

#### Audience

Y1 Teachers, Maths Leads

## Day Course

### Rethinking the Y1 Classroom

Research identifies that children benefit if the curriculum and provision in Y1 builds on their previous experiences and provides rich opportunities for exploration and challenge. This course has been specifically designed to support Y1 teachers who are looking to develop the principles of continuous provision and enhancements in their classrooms that enable children to make progress.

Delegates will have the opportunity to consider how a well-organised, challenging environment, underpins effective learning and teaching across the whole curriculum. Inspiring and practical case studies will be shared that demonstrate how schools have successfully transformed their classrooms and the powerful impact this has had on learning.

#### Venue / Date

Northern Centre: Wed 28th Feb  
London Centre: Thur 8th Mar

#### Price

£175.00 (exc. VAT) per delegate

#### Audience

Y1 Teachers, KS1 Leaders



# Maximising Learning in Y1



## Day Course

### Unpicking the Issues: Securing a Broad & Balanced Curriculum in Y1

Ensuring that all aspects of the KS1 curriculum are effectively taught and that key skills are embedded for children to make at least good progress from their starting points is an ongoing challenge. We also know that children at this Key Stage learn most effectively when given opportunities to make links, explore and think critically.

Delegates will explore ways to manage these challenges and how adult-led, carefully planned provision and opportunities for child-initiated learning can bring about successful outcomes.

#### Benefits

- Clarity of how to develop KS1 provision that supports the whole curriculum and ensures progression
- An understanding of how 'incidental learning' can be used to meet curriculum objectives
- Greater confidence in how to accurately use observation to support the assessment process

#### Venue / Date

Northern Centre: Fri 6th Oct  
London Centre: Fri 29th Sept

#### Price

£175.00 (exc. VAT) per delegate

#### Audience

Y1 Teachers, KS1 Leaders

## Twilight

### What's the Time? Harnessing Children's Interests in KS1 Maths

Young children are fascinated by time: the time of day, the days of the week, the seasons, birthdays and other special events. Harnessing this interest as a way of developing skills to measure, record and tell the time, is key to ensuring progression.

In this twilight we will explore practical ways to build on this fascination and share ideas to make 'time' an integral part of your classroom, both through routines and enhancing your provision.

#### Venue / Date

Northern Centre: Thur 16th Nov  
London Centre: Wed 8th Nov

#### Price

£35.00 (exc. VAT) per delegate

#### Audience

Y1 Teachers, Maths Leads, TAs

## How to Book Training

Courses take place in our Northern and London Centres. All our Full Day Courses include lunch and refreshments per delegate. For further details and to book go online at: [earlyexcellence.com/cpd-courses](http://earlyexcellence.com/cpd-courses)

# Be the First to Explore Ofsted's New Report Join a National Briefing

Half Day  
Briefings

**Don't miss this essential half day update designed specifically for Headteachers and Senior Leaders responsible for the EYFS and KS1. Following on from the success of our Summer Briefing led in partnership with the NAHT, we are delighted to once again welcome Ofsted to our Autumn National Briefings, where Gill Jones and Lee Owston will present their latest Early Years Report. Due to be published in early Autumn, we will hear the findings and recommendations of this report hot off the press!**

If you attended one of our Summer National Briefings, you will know that we announced the findings from The Hundred Review of the Reception Year, which captured a comprehensive picture of practice and provision in YR and explored the issues, tensions and confusions that exist. We fully recommend reading the report summary which has important recommendations for Senior and Middle Leaders responsible for progress and attainment in YR.

There is no doubt that Ofsted's Early Years Report due to be published in Autumn 2017 and presented at these briefings, will include an equally important range of findings and have many recommendations for schools. The briefings will certainly be packed with information to keep you up to speed with national developments and how these will impact on you and your team. You will hear about the future of Primary Assessment and Accountability, the direction of travel for the YR and the latest Ofsted Report, directly from HMI. A vital event, ideal for Senior Leaders and EYFS Leaders to attend together.

## Gain a National Perspective from Early Excellence



**Jan Dubiel**  
Early Excellence  
National Director

Jan Dubiel is a highly regarded national speaker and the National Director of Early Excellence. He has a strong commitment to developing the pedagogy of early childhood, promoting deep thinking about practice and provision. Through his work as a Nursery, Reception and Y1 Teacher, and more recently as the Programme Leader for the EYFS and EYFS Profile at QCDA, Jan has pursued a particular interest in assessment and ways to document and demonstrate children's achievement and progress.



**Lynda Trueman**  
Early Excellence  
National Development  
Manager

Lynda is a highly experienced School Leader, Adviser and Consultant who has worked in the Early Years and Primary Sector for 35 years. She has a strong reputation for supporting school improvement developed through her roles as Headteacher, LA Adviser, Head of Early Years & Childcare and School Improvement Partner for Salford Local Authority.



The Hundred Review  
full report – download at:  
[earlyexcellence.com/  
hundredreview](http://earlyexcellence.com/hundredreview)



**Gain the Latest Insights  
from Ofsted HMI**



**Gill Jones**  
HMI – Deputy Director  
for Early Education

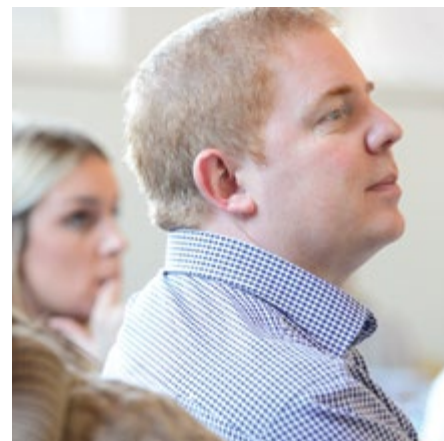
Gill Jones is one of Her Majesty's Inspectors and joined Ofsted in 2007, leading inspections of schools and children's centres. She is the Deputy Director for Early Education Policy, introducing the early years common inspection framework and responsible for the Early Years Annual Reports. Gill has held a number of roles in Ofsted, including Senior HMI in the East of England and Principal Officer for the inspection policy of maintained primary schools.



**Lee Owston**  
HMI – National Lead  
for Early Years

Lee Owston is one of Her Majesty's Inspectors and is Ofsted's Specialist Adviser for Early Education. Before joining Ofsted, Lee held senior leadership positions in schools, local authorities and national organisations, with a constant focus on the early years. He has worked as an adviser for the Department of Education contributing to national publications on communication and language, phonics and assessment and as a senior lecturer in initial teacher education. Lee is also a Chartered Educational Assessor. He regularly leads early years and school inspections.

# Select Your Date & Venue



**Durham**  
Ramside Hall Hotel  
Monday 30th October

**Huddersfield**  
Northern Centre  
Thursday 2nd November

**Solihull**  
Crowne Plaza  
Friday 3rd November

**London, Canada Water**  
London Centre  
Monday 6th November

**Nottingham**  
Novotel Nottingham Derby Hotel  
Tuesday 7th November

**London, Canada Water**  
London Centre  
Thursday 9th November

**Time**  
Morning session: 9.30am – 12.00pm  
Afternoon session: 1.00pm – 3.30pm

**Price**  
£65.00 (exc. VAT) per delegate  
including refreshments

**Audience**  
Headteachers, Senior Leaders,  
EYFS & KS1 Coordinators, Local  
Authority Advisers



**'Fantastic! Really informative  
briefing. Lots of next steps  
and left me feeling inspired.'**

**Anna Crowther-Riley**  
Deputy Headteacher, Wykebeck  
Primary, Leeds

## How to Book

To book go online at:  
[earlyexcellence.com/national-services](http://earlyexcellence.com/national-services)

# National Conference Early Childhood Education in the 21st Century

## National Conference

**Don't miss this years' Annual Early Excellence Conference which, as always, promises to be a fantastic event – the highlight of our CPD calendar. With over 800 practitioners joining us last year – and a phenomenal input from Lord Robert Winston – how can we move on from this and continue our deep thinking about child development, with a little bit of 'celebrity' thrown in?**

Well we think we've done it, with a morning keynote by Dr. Sam Wass from Channel 4 series, 'The Secret Life of 4, 5 and 6 Year Olds.'

Sam will open the conference with an incisive and evidence led input on the factors influencing childhood and the specific challenges children face today. Drawing on his research and involvement in scientific projects, Sam will address:

- The different factors that cause and alleviate stress in children
- Why some children find it easier to concentrate than others do
- What we can learn from children with Attention Deficit Disorder, Autism Spectrum Disorders and Rett Syndrome

Supported by a wealth of input from exceptional teachers and early years specialists, this conference offers pedagogical solutions to modern issues. It will bring 21st century childhood issues to the surface to inform and challenge our thinking about effective teaching and learning in the early years.



**'Inspiring and thought provoking – this conference left me emotionally moved and professionally determined.'**

**Andrea Liversidge**  
Principal, Maltby Lilly Hall Academy,  
Rotherham





*the secret life of  
4, 5 & 6 year olds*

Sam Wass is the on-screen scientist in the Channel 4 series *The Secret Life of 4, 5 and 6 Year Olds*.



**Dr Sam Wass**  
Keynote Speaker

Dr Sam Wass is perhaps best known as an on-screen scientist in the Channel 4 series *The Secret Life of 4, 5 and 6 Year Olds* (2014-ongoing).

Sam studied Experimental Psychology at Oxford University, and did his PhD at the Centre for Brain Cognitive Development in London. He was then awarded a British Academy Postdoctoral Fellowship, based at the Medical Research Council Cognition and Brain Sciences Unit at Cambridge. He is currently funded by an ESRC Future Research Leaders Fellowship, based at the University of East London.

Sam's research use neuroimaging, heart rate recording, and behavioural testing to examine the different factors that cause and alleviate stress in children, why some children find it easier to concentrate than others do, and how these two things might be related.

He works with typical children as well as children growing up in low socio-economic status backgrounds in East London. He is also a collaborator on projects in London, New York and Canada with clinical populations (children with Attention Deficit Disorder, Autism Spectrum Disorders and Rett Syndrome), funded by the Medical Research Council, NIHR and others.

# Select Your Date & Venue



**Huddersfield**  
Northern Centre  
Wednesday 29th November

**Huddersfield**  
Northern Centre  
Thursday 30th November

**London, Canada Water**  
London Centre  
Tuesday 21st November

**London, Canada Water**  
London Centre  
Wednesday 22nd November

**Time**  
9.30am – 3.30pm

**Price**  
£200.00 (exc. VAT) per delegate including lunch and refreshments

Last years' attendees, EExBA and EExAT subscribers can benefit from 25% off. Look out for your discount code in the July update email.

**Audience**  
Headteachers, Senior Leaders, EYFS & KS1 Coordinators, Local Authority Advisers

## How to Book

Please contact  
charlotte@earlyexcellence.com  
for details. To book go online at:  
earlyexcellence.com  
/national-services



# Training Programme Overview

This overview details all of the Autumn term dates for CPD and events. Where available, Spring and Summer dates can be found online at: [earlyexcellence.com/cpd-courses](http://earlyexcellence.com/cpd-courses)

## Leadership

### Monitoring & Evaluation

Being One Step Ahead: Preparing for External Inspection of the EYFS  
Full Day Course

Northern Centre: Fri 22nd Sept  
London Centre: Wed 20th Sept  
(also running in Spring and Summer 2018)

Completing Your SEF: Effective Self Evaluation of Your Early Years  
Full Day Course

Northern Centre: Mon 25th Sept  
London Centre: Mon 2nd Oct  
(also running in Summer 2018)

Gathering Evidence: Preparing for Successful EYFS Moderation  
Half Day Course

Northern Centre: Tue 13th Mar  
London Centre: Tue 13th Mar

Governor Essentials: Being Informed About the EYFS  
Twilight

Northern Centre: Mon 6th Nov  
London Centre: Tue 31st Oct  
(also running in Spring and Summer 2018)

### Transforming Practice

Rethinking Your Nursery  
Twilight

Northern Centre: Thu 12th Oct  
London Centre: Wed 4th Oct  
(also running in Spring and Summer 2018)

Rethinking Your Reception  
Twilight

Northern Centre: Mon 9th Oct  
London Centre: Tue 3rd Oct  
(also running in Spring and Summer 2018)

Rethinking Your KS1  
Twilight

Northern Centre: Tue 17th Oct  
London Centre: Mon 16th Oct  
(also running in Spring and Summer 2018)

### Ensuring Effective Assessment

Ensuring Effective Early Years Assessment  
Full Day Course

Northern Centre: Wed 1st Nov  
London Centre: Tue 14th Nov

Ensuring Effective KS1 Assessment  
Full Day Course

Northern Centre: Mon 20th Nov  
London Centre: Fri 24th Nov

### New to Senior & Middle Leadership

New to Headship: Understanding Early Years  
Full Day Course

Northern Centre: Tue 31st Oct  
London Centre: Tue 17th Oct  
(also running in Summer 2018)

New to Leading in the EYFS  
Full Day Course

Northern Centre: Tue 10th Oct  
London Centre: Tue 10th Oct

New to Leading in KS1  
Full Day Course

Northern Centre: Thu 12th Oct  
London Centre: Thu 12th Oct

### Developing as a Leader

Strategically Leading Outstanding Teaching in the EYFS  
Full Day Course

Northern Centre: Fri 20th Apr  
London Centre: Thu 10th May

Strategically Leading Outstanding Teaching in KS1  
Full Day Course

Northern Centre: Tue 14th Nov  
London Centre: Wed 15th Nov  
(also running in Spring and Summer 2018)

Developing an Action Research Project  
Three Day Course

Northern Centre:  
Day One – Fri 10th Nov  
Day Two – Fri 16th Mar  
Day Three – Fri 15th Jun  
London Centre:  
Day One – Fri 17th Nov  
Day Two – Fri 23rd Mar  
Day Three – Fri 8th Jun

### EYFS Leadership Programme

Leading the EYFS with Skill & Confidence  
Four Day Programme

Northern Centre:  
Day One – Mon 2nd Oct  
Day Two – Tue 5th Dec  
Day Three – Fri 23rd Feb  
Day Four – Fri 27th Apr  
London Centre:  
Day One – Fri 22nd Sept  
Day Two – Mon 4th Dec  
Day Three – Fri 23rd Feb  
Day Four – Fri 27th Apr

## Developing Practice

### Getting it Right from the Start

Moving into the EYFS

Three Day Course

Northern Centre:  
Day One – Tue 19th Sept  
Day Two – Wed 27th Sept  
Day Three – Wed 15th Nov  
London Centre:  
Day One – Tue 19th Sept  
Day Two – Thur 28th Sept  
Day Three – Thur 28th Nov

Moving into Y1

Three Day Course

Northern Centre:  
Day One – Mon 18th Sept  
Day Two – Tue 26th Sept  
Day Three – Tue 7th Nov  
London Centre:  
Day One – Mon 18th Sept  
Day Two – Thur 28th Sept  
Day Three – Thur 2nd Nov

**Booking Information**

Book and view listings of all our courses online at: [earlyexcellence.com/cpd-courses](http://earlyexcellence.com/cpd-courses)

**Course Timings & Prices**

Four Day Course: 9.30am-3.30pm, £550.00  
 Three Day Course: 9.30am-3.30pm, £450.00  
 Two Day Course: 9.30am-3.30pm, £300.00  
 Full Day Course: 9.30am-3.30pm, £175.00  
 Half Day Course: 9.30am-12pm, £75.00  
 Workshop: 10am-12pm, £55.00  
 Twilight: 4.30-6pm, £35.00  
 Seminar: 9.30am-3.30pm, £200.00  
 Half Day Briefings: 9.30am-12pm or 1-3.30pm, £65.00  
 National Conference: 9.30am-3.30pm, £200.00

Please note, all prices exclude VAT.

**Supporting Vulnerable Groups**

**Demonstrating Impact: Effective Use of Pupil Premium Funding**  
 Full Day Course

Northern Centre: Fri 1st Dec  
 London Centre: Wed 29th Nov

**Recognising the Needs of Boys' Learning**  
 Full Day Course

Northern Centre: Mon 16th Oct  
 London Centre: Tue 14th Nov

**Working Together: Understanding How to Successfully Engage with Parents**  
 Half Day Course

Northern Centre: Tue 6th Feb  
 London Centre: Tue 6th Feb

**Working with Two Year Olds: Developing Your Provision**  
 Twilight

Northern Centre: Thur 19th Oct  
 London Centre: Thur 19th Oct

**Removing Barriers to Learning**

**Ensuring Quality Talk**  
 Full Day Course

Northern Centre: Fri 2nd Feb  
 London Centre: Thur 8th Feb

**Spotlight on Early Years****Ensuring Effective Practice**

**Developing Young Writers in the EYFS**  
 Two Day Course

Northern Centre:  
 Day One – Tue 21st Nov  
 Day Two – Fri 26th Jan  
 London Centre:  
 Day One – Mon 13th Nov  
 Day Two – Mon 8th Jan

**Developing Young Mathematicians in the EYFS**

Two Day Course

Northern Centre:  
 Day One – Mon 6th Nov  
 Day Two – Mon 15th Jan  
 London Centre:  
 Day One – Fri 17th Nov  
 Day Two – Fri 19th Jan

**Sounding it Out! Fun with Phonics**  
 Workshop

Northern Centre: Thur 16th Nov  
 London Centre: Thur 2nd Nov  
 (also running in Spring and Summer 2018)

**To Ten & Back: Number Bonds in the Early Years**  
 Twilight

Northern Centre: Wed 18th Oct  
 London Centre: Wed 18th Oct

**EYFS Essentials**

**Supporting Children's Self-Initiated Learning: How to Use Continuous Provision Effectively**  
 Workshop

Northern Centre: Wed 27 Sept  
 London Centre: Wed 27th Sept  
 (also running in Spring and Summer 2018)

**Building on Children's Interests: How to Maximise Opportunities for Learning**  
 Workshop

Northern Centre: Mon 2nd Oct  
 London Centre: Wed 11th Oct  
 (also running in Spring and Summer 2018)

**Securing Effective Interactions: How to Support & Extend Children's Learning**  
 Workshop

Northern Centre: Tue 14th Nov  
 London Centre: Wed 8th Nov  
 (also running in Spring and Summer 2018)

**Spotlight on KS1****Embracing the Challenges of Y1**

**Extending Young Writers in Y1**  
 Two Day Course

Northern Centre:  
 Day One – Wed 1st Nov  
 Day Two – Tue 27th Feb  
 London Centre:  
 Day One – Tue 28th Nov  
 Day Two – Wed 7th Mar

**Extending Young Mathematicians in Y1**  
 Two Day Course

Northern Centre:  
 Day One – Fri 6th Oct  
 Day Two – Fri 24th Nov  
 London Centre:  
 Day One – Fri 13th Oct  
 Day Two – Fri 1st Dec

**Rethinking the Y1 Classroom**  
 Full Day Course

Northern Centre: Wed 28th Feb  
 London Centre: Thur 8th Mar

**Maximising Learning in Y1**

**Unpicking the Issues: Securing a Broad & Balanced Curriculum in Y1**  
 Full Day Course

Northern Centre: Fri 6th Oct  
 London Centre: Fri 29th Sept

**What's the Time? Harnessing Children's Interests in KS1 Maths**

Twilight

Northern Centre: Thur 16th Nov  
 London Centre: Wed 8th Nov

**National Services & Events****Inspirational Thinking Seminar**

Full Day Course

Northern Centre: Wed 14th Mar  
 London Centre: Fri 16th Mar

**Autumn National Briefings 2017**

Half Day Course

Ramside Hall Hotel: Mon 30th Oct  
 Northern Centre: Thur 2nd Nov  
 Crowne Plaza Solihull: Fri 3rd Nov  
 London Centre: Mon 6th Nov  
 Novotel Nottingham Derby Hotel:  
 Tue 7th Nov  
 London Centre: Thur 9th Nov

**National Conference 2017**

Full Day Course

Northern Centre: Wed 29th Nov  
 Northern Centre: Thur 30th Nov  
 London Centre: Tue 21st Nov  
 London Centre: Wed 22nd Nov

# Working Together

Discover the broad range of ways that you can work in partnership with Early Excellence and connect with colleagues at our Inspirational Centres and in the wider community.



## Keep Connected: Join Our Forums

### EYFS Leaders Forum

These termly events are a valuable opportunity for you to understand the latest national developments – to meet other EYFS Leaders, build relationships, share experiences and explore the innovation in our Centres.

### EYFS NQT / RQT Forum

If you have a newly qualified or inexperienced teacher in your team, then this forum will help them to become part of the wider teaching community. It will provide a unique opportunity to share experiences and raise questions in a supportive environment.

### KS1 Forum

New this coming academic year – these sessions are a fantastic opportunity for you to be part of a supportive community of teachers keen to share good practice, discuss potential challenges related to KS1 and keep up to date with national developments.

Forums are free of charge with refreshments on arrival from 4pm, with input and discussion 4.30pm – 6.00pm.

For dates please visit:  
[earlyexcellence.com/centre-events](http://earlyexcellence.com/centre-events)



## Book a Learning Tour at Our Centres

In our Centres you will find interactive environments that are constantly evolving to showcase outstanding provision and best practice galleries that exhibit innovative practice from a range of schools. Book a free Learning Tour and bring your team along to see examples of continuous provision, seasonal displays, new enhancements and inspiring activity ideas to revive and refresh your practice in the EYFS and KS1.

## Book a Surgery

Having the opportunity to talk through plans with specialists is invaluable in helping you transform those ideas into a successful reality. If you would like personalised support with your development plans our experienced curriculum team is here to help. You can book a two hour consultation during which we will help you explore whatever your issue is. Whether this be developing your current provision, or focusing on an aspect of the early years or KS1 curriculum.

The price of a surgery is £200.00 (exc. VAT), including lunch for up to 4 people. For more details please contact [phil@earlyexcellence.com](mailto:phil@earlyexcellence.com)



## CPD in Partnership

### Transformational Cluster Projects

For nurseries, schools and MATs who are wishing to make significant investment in early years, and inform and inspire significant developments in EYFS and/or KS1, these projects are a guaranteed success. Tried and tested over many years, with many schools and settings involved, they bring practitioners together to focus on key aspects of practice and provide a programme of training and support.

Each project includes a series of training days, school based consultancy and resources where required, to enrich the learning environment.

### Interactive Environment Workshops – On the Road!

We know that it isn't always possible for you and your team to visit our Centres, so to support you in meeting your CPD needs, we take our Centres 'on the road' in the form of Interactive Classrooms and deliver a range of workshops for leaders and practitioners.

To find out more information about our range of external services please contact [michelle@earlyexcellence.com](mailto:michelle@earlyexcellence.com)



# Inspiring Centres for You & Your Events



## Hire Our Flexible Space

Our Huddersfield and London Centres have many rooms available to hire for your own events – from small meeting spaces to large conference rooms. Our comfortable rooms are air-conditioned and equipped with state-of-the-art audio visual equipment plus free WiFi. We can also cater for your meeting or event. To enquire contact [phil@earlyexcellence.com](mailto:phil@earlyexcellence.com)



## Inspirational Bespoke Training

We offer a wide variety of training and specialise in helping schools with similar needs to share training through local networks and courses. Whether you need training for a group of NQTs or have a specific area of practice to develop, we can help at our Centres or in your locality. To enquire contact [nikki@earlyexcellence.com](mailto:nikki@earlyexcellence.com)



---

Book and view listings of all our  
courses online at:  
[earlyexcellence.com/cpd-courses](http://earlyexcellence.com/cpd-courses)

---

**Venue**

Training courses  
are held at our Northern  
Centre and London  
Centre. National events  
venues will be specified  
individually.

**Confirmation Notice**

Confirmation notices  
are automated  
and sent at the time  
of booking online.  
If you do not receive  
your confirmation notice,  
please contact us.

**Payment Terms**

All courses and other  
training event fees  
are shown excluding  
VAT, which is added  
and itemised on the  
invoice. Please do not  
issue payment before  
receiving your invoice.  
Payment is due within  
30 days of the invoice  
date.

**Terms & Conditions**

Our full T&Cs are  
available at [www.earlyexcellence.com/terms](http://www.earlyexcellence.com/terms)  
or request  
a copy by contacting  
us on 01422 311 314.

**How to Cancel**

Cancellations MUST  
be made through  
your online account –  
this can be done  
within your original  
online order.  
Cancellations notified  
more than five working  
days before the  
course do not incur  
a cancellation fee.  
Cancellations notified  
within five working  
days of the course,  
or non-attendance for  
any reason, incur the  
full course fee.

---

## Get Connected



**Twitter**

[@earlyexcellence](https://twitter.com/earlyexcellence)  
Follow us and be the first to find out  
about our announcements.



**Facebook**

[facebook.com/earlyexcellence](https://facebook.com/earlyexcellence)  
Like us and share info about our latest  
news and events.



**Instagram**

[instagram.com/earlyexcellence](https://instagram.com/earlyexcellence)  
Follow our page for images, videos and  
conversation.



**Pinterest**

[pinterest.com/earlyexcellence](https://pinterest.com/earlyexcellence)  
Follow our board for visual inspiration  
and new ideas.

---